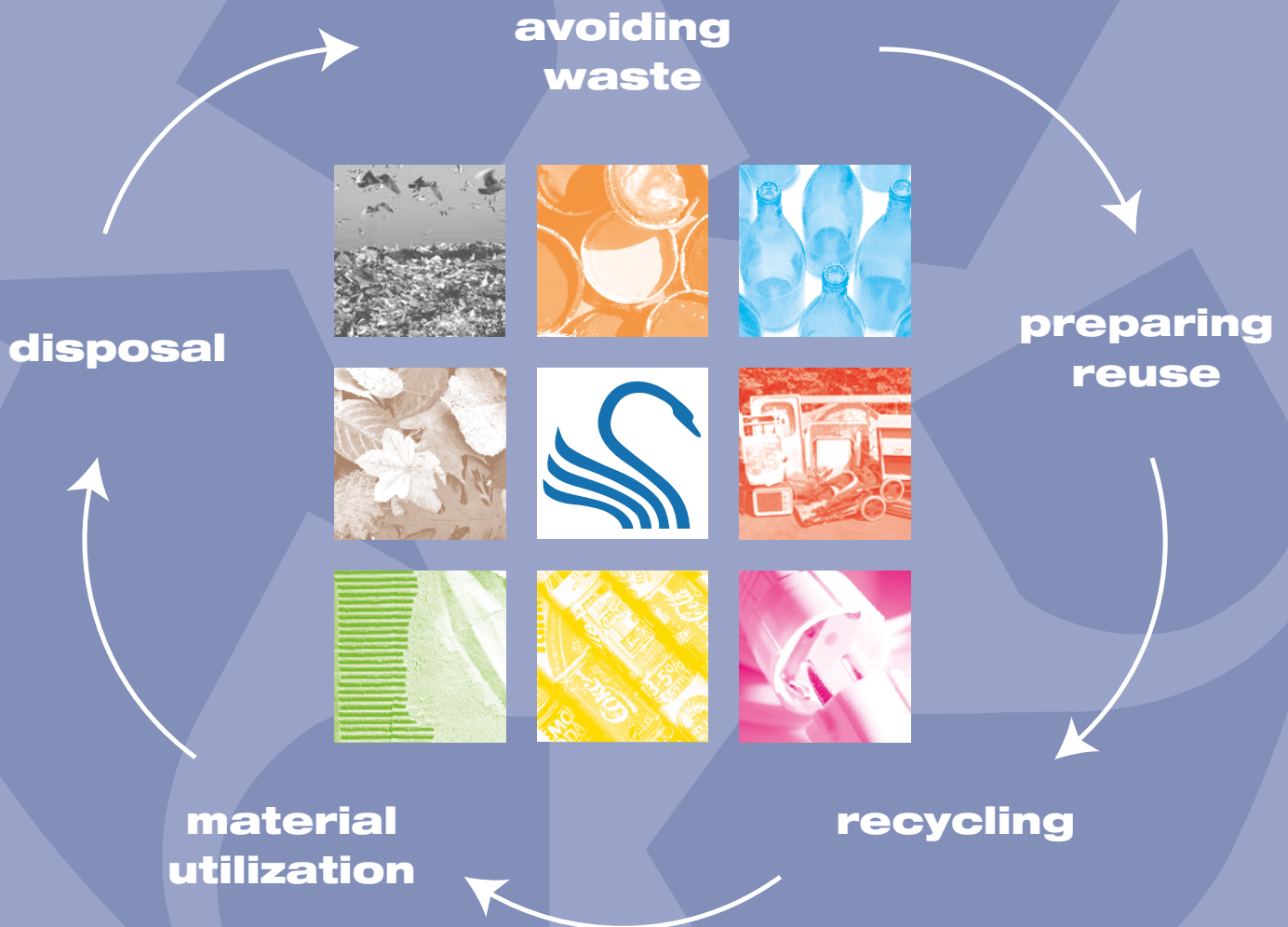


WASTE DISPOSAL CALENDAR 2025



Hinweis / important note!

Der Abfallkalender 2025 steht auch in einer englischen Version zur Verfügung.

The waste disposal calendar is available in English as well.

www.usk-kleve.de / Abfallentsorgung und Wertstoffe

Dear citizens of Cleves,

since 2024 the waste calendar has been printed only in a limited edition so that people without access to digital media can enjoy the usual USK services. With the change to digital media we intend to save environmental resources and save costs.

Could you also do without the printed calendar? You can find the digital calendar easily to download – also in English – on „www.usk-kleve.de-AbfallentsorgungundWertstoffe“. It is easily available via your smartphone or your personal computer. We would be happy to take this step towards increased sustainability together with you.

We also train new apprentices! Feel free to enquire about our company and training opportunities on www.usk-kleve.de-Ausbildungsberufe. We look forward to your enquiries!

Kind regards,
your

We train
young
people!



Here you can find our current career opportunities:



The waste pick-up app for the citizens of Cleves: The Bürger-App

The “Umweltbetriebe der Stadt Kleve” (USK) offer all citizens an app, the so-called “Bürger-App”. With the help of this app you get an overview of all waste pick-up dates, and you are automatically reminded of forthcoming pick-up dates. Furthermore, you can book an appointment for the pick-up of bulky waste, using this app. Apart from this, the app also features the locations of the storage containers for old textiles in Cleves and the opening times of the Cleves recycling centre. The Bürger-app also contains a waste alphabet, which advises you on how and where to correctly dispose of waste.

Using the info button in the app, you can always receive the current waste pick-up calendar and the current price list of the Cleves recycling centre. The app enables you to receive push notifications from the USK.



This way you have all important information at hand quickly and easily. The USK AöR Bürger-app is available for Android and Apple devices and can be found in the corresponding app stores.

The Bürger-App Download now

- > waste pick-up dates
- > notifications
- > bulky waste on demand
- > waste alphabet



Apple App Store



Google Play Store

Via the USK website you can save the waste calendar as an iCal calendar file. This file can be opened in digital calendar applications.

Using the USK website, you can also check, save and print out your personal waste calendar as a PDF file.

GENERAL INFORMATION:

- The waste containers and the glass boxes have to be placed for pick-up on the day of disposal by 6am.
- **Please note the correct filling of the wastebins!** Waste containers must be filled only up to the brim so that containers can be closed. Only then can they be emptied without any problems. If containers are not closed, disposal cannot be guaranteed.



The yellow waste bin

Contacts to ask when you have general questions about the yellow waste bin

Do you need a new yellow waste bin?
Do you want to replace your current container?
Is your yellow waste bin damaged?

Questions like this you can address to

Schönackers Umweltdienste GmbH & Co. KG
- by telephone on 0800 888 43 73 (free of charge)
- using the online form on schoenackers.de
- by e-mail on dsd-kreiskleve@schoenackers.de

Do you need yellow waste bags as an exception?

Currently, you can request the delivery of yellow waste bags, calling 0800 888 4373 free of charge, but you have to state a reason for your request (for instance, a one-off amount of additional waste or a special permit to continue the pick-up of yellow waste bags).

You will then receive by mail a service card, with which you can receive yellow waste bags as needed at USK, 62 Brabanterstraße, 47533 Kleve.

Special collection of recyclable material:

Since 2013 USK has regularly been pursuing a special collection system in order to pick up certain types of recyclable material. This is done with the help of the glass collection boxes that are used on the day of disposal. Other than that, the collection boxes for the disposal of waste glass are to be used for this.



If you use your collection boxes for the disposal of waste glass, the box volume must not be exceeded. As to weight, the boxes must be filled in a way that they are not damaged during transport!

Every 8 weeks the recyclable materials are collected, namely shortly after the dates for the collection of waste glass (for exact dates see the calendar at the end of this brochure).

- **White box:** Old textiles and shoes (bundled in pairs), packed in plastic bags.
- **Green box:** Assorted small metals (not liquid or combustible metals).
- **Brown box:** Electrical or electronic devices (only small devices) of groups 2 and 5 in accordance with §14 section 1 of ElektroG (information or telecommunication devices, entertainment electronics devices, small household devices, electrical and electronic tools, toys, sports devices, medical products, control and surveillance devices, no lighting devices - and cables).

Note: The collection of recyclables has to be registered by telephone with USK on 02821 - 89 94 00.

Locations of the storage containers for old textiles/shoes:



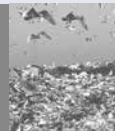
- Brienen, Briener Straße (Fire department)
- Donsbrüggen, Mehrer Straße (Church car park)
- Griethausen, Postdeich (Sports ground car park)
- Keeken, Düffelgaustraße (Sports ground)
- Kellen, Briener Straße (Car park in front of XOX)
- Kellen, Postdeich (KAG school centre)
- Kellen, van-den-Bergh-Straße (Sports ground car park)
- Kellen, Zur alten Kirche (Club home shooting association)
- Kleve, Albersallee (Hospital)
- Kleve, Brabanter Straße (USK)
- Kleve, EOC car park (at Hoffmannallee/Secondary school)
- Kleve, Karl-Leisner-Straße (at Tönnissen-Center)
- Kleve, Klever Ring (at Hagebaumarkt)
- Kleve, Königsallee (Exit cemetery car park)
- Kleve, Ludwig-Jahn-Straße (Car park)
- Kleve, Tichelpark (Car park)
- Kleve, Wasserstraße (Car park city hall)
- Materborn, Hamstraße at corner Am Forsthaus
- Reichswalde, Dorfanger (Sports ground car park)
- Rindern, Keekener Straße (Fire department)
- Warbeyen, Hermesplatz

If additional locations are set up, we will inform you accordingly.

Note: Regarding the use of the storage containers and the special collection of recyclable material we ask you to place old textiles and shoes (which should be bundled in pairs) in **plastic bags** before you put them into storage containers or glass disposal boxes. This way they are protected against dampness and dirt.



Which waste goes where?



The grey waste bin

The grey waste bin takes only the so-called "remaining waste", that is, waste that cannot be recycled.

YES, this goes in:

Only waste which cannot be recycled, such as:

- Fatty, wet paper
- Vacuum cleaner bags
- Waxed and oiled paper
- Hygienic paper such as nappies, paper handkerchiefs or sanitary towels
- Metals covered with non-metallic materials
- Video cassettes
- Objects that consist of different types of metal
- Window or mirror glass
- Glass shards, ceramic, porcelain
- Leftovers of processed food
- Vegetable fats
- Expired medicine
- Rests of wallpaper
- Hardened paints and coatings

NO, this does not go in:

Any recyclable waste that is collected in the green and brown waste-bins, the glass boxes and the yellow waste bags

Hazardous materials such as:

- Batteries
- Fluorescent tubes, energy-saving light bulbs
- Paints and coatings
- Acids and alkalis
- Oils and fats
- Insecticides and plant protection products
- Chemicals of all kinds
- Old clothes
- Construction work debris
- Electrical and electronical scrap



The yellow waste bin

The yellow waste bin is intended for packaging that is made of plastic, metal or composites and that as a rule carries the "green dot".

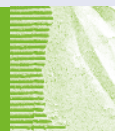
YES, this goes in:



- **Metals:**
 - Tin and beverage cans
 - Closures
 - Aluminium boxes, lids and foil
 - Spray and coating cans
- **Composites:**
 - Beverage and milk cartons
 - Vacuum packaging
 - Pizza boxes with aluminium coating
- **Plastics:**
 - Carrier bags
 - Plastic bags
 - Dishwasher liquid, washing liquid and body care liquid bottles
 - Dairy product boxes
 - Margarine boxes
 - Filling material made of plastic that is often found in dispatch packaging, such as bubble foil, foam material or styrofoam

NO, this does not go in:

- Metals covered with non-metallic materials
- Batteries
- Packaging that contains hazardous material, such as spray or coating cans that contain CFC
- Silage film
- Extremely dirty packaging



The green waste bin

The green waste bin takes old paper as well as paper and cardboard packaging material.

YES, this goes in:

- Newspapers and magazines
- Catalogues, books, files, journals
- Any other clean paper
- Cardboard boxes
- Corrugated cardboard
- Other cardboard materials
- Paper shreds

NO, this does not go in:

- Dirty, fatty and wet paper
- Waxed and oiled paper
- Coated paper or cardboard such as beverage Pizza packaging
- Yoghurt, margarine and ice-cream boxes
- Parchment paper
- Wallpaper
- Vacuum cleaner bags
- Hygienic papers such as nappies, paper handkerchiefs or sanitary towels
- Non-paper material such as inlays in chocolates or cigarette boxes



The glass boxes

Waste glass is collected in three boxes for white (clear), brown and green glass respectively.

YES, this goes in:



- Any kind of hollow glassware such as bottles or glasses
- White glass into the white box
- Brown glass into the brown box
- Green glass and glass of other colours (blue, black) into the green box

NO, this does not go in:

- Window glass
- Mirror glass
- Porcelain
- Ceramic
- Flower vases
- Drinking glasses
- Clay
- Bottle and glass closures (also cork)
- Light bulbs and fluorescent tubes
- Glass shards



The brown waste bin

The brown waste bin takes all organic waste, that is, waste that can be composted.

YES, this goes in:

- Compostable garden and green waste
- Tree-cut remains of up to ten centimetres in diameter
- Roots of bushes or similar plants
- Cut grass
- Leaves
- Flowers and weeds
- Fruit and vegetable waste and similar material that grows in nature

NO, this does not go in:

- Leftovers of processed food
- Material hazardous to nature
- Foreign material such as metals, stones, plastics, big and strong rootwork, household waste
- Animal droppings and bedding material used in pet care

NOTE: GARDEN AND GREEN WASTE

Outside the days when the brown waste bin is emptied it is also possible throughout the year to take garden waste to the USK waste recycling centre in Kleve, 1 Wilhelm-Sinsteden- Straße (at corner Briener Straße), for a fee. Please note the centre opening times.

Which waste goes where?



Special waste Hazardous waste (from households)

Special waste with hazardous content must not be thrown into any of the waste bins or recyclables containers. Liquid special waste must not be poured into the sewage system so that it does not reach the wastewater treatment plant.

YES, this is special waste (examples):

- Petrol
- Waste oil
- Plant protection products
- Spray cans that contain CFC
- Acids and alkalis
- Batteries
- Cleaning liquids
- Solvents
- Glue
- Photographic chemicals

Special waste can be disposed of at the special waste disposal vehicle, which stands on different locations in the town area. You can dispose amounts of about 30 kilograms or 30 litres.

Schedule of the special waste disposal vehicle:

In the odd months: 23.01., 20.03., 22.05., 24.07., 25.09., 20.11.

Warbeyen,	Huiskampstraße (Hermesplatz) 9.00 to 9.30am
Brienen,	Briener Straße / Hooger Geest 10.00 to 10.30am
Rindern,	Drususdeich (sports hall) 11.00 to 11.30am
Reichswalde,	Dorfanger / Kattenwald 12.00 to 12.30pm
Kellen,	Wilhelm-Sinsteden-Str. 1 (at corner Briener Str.) (USK waste recycling centre) 13.45 to 15.45pm
Kleve,	Brabanter Straße / Nimweger Straße (USK) 16.15 to 17.15pm

In the even months: 20.02., 24.04., 26.06., 21.08., 23.10., 18.12.

Griethausen,	Postdeich (sports ground) 9.00 to 9.30am
Düffelward,	Röstendaastraße / Deichbogen 10.00 to 10.30am
Keeken,	Düffelgastraße (Fire department/Sports ground) 11.00 to 11.30am
Donsbrüggen,	Hauptstraße (car park) 12.00 to 12.30pm
Kellen,	Wilhelm-Sinsteden-Str. 1 (at corner Briener Str.) (USK waste recycling centre) 13.45 to 15.45pm
Kleve,	Brabanter Straße / Nimweger Straße (USK) 16.15 to 17.15pm



Electric and electronic waste

Devices that carry the symbol “crossed-through waste container” are no usual household waste and must not be thrown into the grey waste bin.

YES, devices such as these are affected:



- Small household devices: irons, toasters, frying machines, coffee machines, ...
- IT/Communication technology: computers, computer screens, laptops, printers, gaming consoles, telephones, ...
- Entertainment technology and photovoltaic modules: radios, TV sets, video recorders, HiFi devices, ...
- Electric tools: drills, saws, sewing machines, lawnmowers, ...
- Electric toys, electric sports and leisure devices
- White goods: washing machines, cookers, tumble driers, refrigerators, ...
- Lighting devices: fluorescent and energy saving lamps, discharging lamps, ...
- Medical devices: blood pressure measuring machines, ...
- Surveillance devices and vending machines: smoke detectors, heating regulators, thermostats, beverage vending machines, ...
- Electric powered products: electrically adjustable desk, flashing sneakers (LED),...

Because of the danger of fire you have to separate batteries and accumulators that are not covered by a device and hand them over separately.

You can hand over old devices free of charge at the following centres:

Kleve recycling centre, 1 Wilhelm-Sinsteden-Straße
(at corner Briener Straße)
Wednesdays 8 am to 12 am & 13 am to 16 pm,
Thursdays and Fridays 10 am to 12 am & 13 pm to 18 pm,
Saturdays 8 am to 12 am

KKA waste disposal Moyland, Kreis Kleve, 133 Alte Bahn,
phone 02824 – 9 26 03
Mondays to Fridays 8am to 4.30 pm,
Saturdays 8.30 am to 12.30 pm

KKA waste disposal Pont, Kreis Kleve, 11 Niersbroecker Weg,
phone 02834 – 91 61 10
Mondays to Fridays 8 am to 5 pm, Saturdays 8.30 am to 12.30pm

Bulky large household devices such as refrigerators or freezers, washing machines, tumble driers, cookers or similar devices can be disposed of through the pick-up of bulky waste by request (this has to be registered in advance) or can be brought to the USK recycling centre during its opening times. Small electric or electronic devices can be prepared for pick-up in the context of the regular household waste pick-up (see information on page 3).

In accordance with legal regulations all electric and electronic devices have to be part of separate disposal. They must not be disposed of with e.g. regular household waste. Affected devices mostly carry the symbol “Crossed waste bin”.

Separate waste disposal enormously contributes not only to the protection of the environment, but also of our health. For instance, this supports re-use, recycling or other types of exploitation. Also, it prevents damage from hazardous materials in such devices.

The disposal of electric or electronic devices from private households is carried out under the auspices of public waste disposal institutions. Furthermore, producers and distributors (e.g. shops) of such devices are obliged to take old devices back. Other types of “disposal” are not legal. When in doubt – ask us.

Which waste goes where?



Bulky waste (from households)

Bulky waste refers to movable household objects that even when they have been broken into smaller pieces do not fit into the regular waste bins, could damage them or could make emptying bins enormously difficult.

As a rule, it is movable parts that you would take with you when you move house.

Pieces of bulky waste must not exceed dimensions of 1.5m x 0.75m x 0.5m and a weight of 75 kilograms.

YES, this is bulky waste (examples):

- Plastic tubs
- Bed frames
- Baskets
- Wooden shelves
- Petrol-driven lawnmowers, catchers for such lawnmowers
- Flower boxes
- Umbrella stands
- Duvets and mattresses
- Clothes drying racks
- Pieces of furniture
- Garden tools
- Bicycles
- Prams
- Carpet material
- Empty suitcases

NO, this is not bulky waste (examples):

- Doors
- Floor materials, eg laminate
- Construction waste
- Objects that were tightly connected to your house or property
- Organic waste
- Contaminated wood
- Bulky waste resulting from a household clearance
- Cardboard boxes, bags and other containers that are filled with waste
- Windows
- Wooden ceiling
- Mixed construction waste
- Sinks, toilets and other ceramic parts
- Car tires and car parts
- Buckets with paint and coating leftovers

Possibilities of disposal:

There are three possibilities for the citizens of Kleve to dispose of bulky waste.

a) Personal delivery to the USK recycling centre Kleve, 1 Wilhelm-Sinsteden-Straße (at corner Briener Straße)

Here you can also leave bulky waste without having to pay an additional fee.

b) Personal delivery to the disposal centre North/Kreis Kleve, Bedburg-Hau/Moyland (Alte Bahn)

Having presented your personal ID and after corresponding registration, you can leave bulky waste at the disposal centre of Kreis Kleve in Bedburg-Hau/Moyland. There is no additional fee.

IMPORTANT:

Bulky waste is accepted only in amounts that correspond to a normal household!!

The recycling centre is available to citizens of Kleve. Therefore, you have to present your personal ID when delivering waste. Also, you have to prove on demand to centre staff that delivered waste is from the area of Kleve. It is sufficient to present a written note that says where the waste has accumulated and who owns the waste (name, address, phone number).

c) Disposal of bulky waste by request

If you cannot or do not want to make use of waste delivery to the disposal centre in Moyland or the USK recycling centre, you have the possibility to have bulky waste disposed on request. In this case, USK pick up bulky waste up to two times a year after corresponding registration. USK inform you of the pick-up day beforehand.

You can register in the following ways:

- by mail via the enclosed „bulky waste postcards“
- by Internet - www.kleve.de or www.usk-kleve.de
- by phone (02821 - 89 94 77)
- personally in the local city office or at USK.

After your registration we inform you about the pick-up day.

On pick-up day please leave your bulky waste in an orderly arrangement on the pavement by 6am. Please separate bulky electric devices as well as old metal and old wood. The whole amount of bulky waste has to be limited to 4 cubic metres or 500 kilograms. Furthermore, you can request this service only two times per year.

For the special service „Bulky waste disposal by request“ a fee of €40.00 has to be paid. Please note the following:

When the date of pick-up is confirmed, you also receive an account number and an invoice number; please transfer the fee to this account, giving the invoice number in the process. Alternatively, you can pay the fee in cash in advance at USK, 62 Brabanter Straße, in the Kleve local city office, 1 Minoritenstraße, and at the USK recycling centre, 1 Wilhelm-Sinsteden-Straße (at corner Briener Straße), ideally when you hand in your bulky waste postcard.

Important note: Bulky waste can be picked up only if the fee of €40.00 was paid in time beforehand. If you transfer the money, it has to be on the USK account at the latest 10 days before the intended day of pick-up.

Waste disposal regions Kleve 2025

A

Ackersheide.....	H	5	H2
Ackerstraße.....	D	2	D1
Ahornstraße.....	G	1	G2
Albersallee.....	C	1	C1
Albrechtstraße.....	C	4	C1
Alexanderhof.....	G	1	G2
Alexanderstraße.....	G	1	G2
Alte Bahn.....	H	5	H2
Alte Mühle.....	F	3	F2
Alte Reeser Straße.....	E	3	E2
Alte Schulgasse.....	B	4	F1
Alte Schulstraße.....	F	3	F1
Am alden Schmidt.....	F	3	F2
Am alten Rhein.....	F	4	F1
Am Bruderbaum.....	H	2	H1
Am Damm.....	A	5	A1
Am Deich.....	E	3	E1
Am Ehrenmal.....	B	4	B1
Am Forstgarten.....	H	4	H2
Am Forsthaus.....	G	1	G1
Am Freudenberg.....	C	1	C1
Am Hang.....	H	2	H1
Am Haus Bimmen.....	A	5	A1
Am Hecken.....	A	5	A1
Am Leitgraben.....	F	3	F1
Am Mühlenberg.....	D	2	D1
Am Naturpark.....	E	3	E2
Am Orth.....	A	5	A2
Am Pölleken.....	H	3	H2
Am Postdeich.....	F	3	F1
Am Ruppenberg.....	G	1	G1
Am Schützenhaus.....	E	3	E1
Am Sender.....	D	2	D2
Am Sportplatz.....	E	3	E1
Am Stein.....	G	1	G1
Amselstraße.....	E	3	E2
An den Vier Winden.....	D	2	D1
An der Brücke.....	F	3	F1
An der Hand.....	G	1	G1
An der Kirche.....	E	3	E1
An der Ley.....	F	3	F2
An der Münze.....	B	4	B2
An der Spoy.....	F	4	F1
An der Willibrordschule.....	E	3	E1
Angerhausenstege.....	B	4	B1
Annabergstraße.....	H	2	H1
Anna-von-Cleve-Str.....	C	1	C2
Antoniusstraße.....	F	2	F2
Antonstraße.....	F	3	F1

Apostelstraße.....	A	5	A2
Arnoldstraße.....	C	4	C1
Arntzstraße.....	B	4	B1
Arnulfstraße.....	B	5	B2
Asternweg.....	D	2	D1
Auf dem Kamp.....	G	1	G1
Auf dem Sand.....	E	3	E1
Augustinusweg.....	G	2	H1

B

Bachstelzenweg.....	A	5	A2
Bachstraße.....	G	1	G2
Backermatt.....	B	4	B1
Baegertstraße.....	G	1	G2
Baersberg.....	F	3	F2
Bahndyck.....	F	3	F1
Bahnhofsplatz.....	B	4	B2
Bahnhofstraße.....	B	4	B2
Banndeich.....	F	3	F2
Bartelgasse.....	B	4	B2
Bauerstraße.....	F	3	F2
Baumgarten.....	A	5	A2
Beatrixstraße.....	B	4	B1
Beethovenstraße.....	D	2	D1
Beginenstraße.....	A	5	A2
Beginnenkamp.....	F	3	F1
Bensdorpstraße.....	B	4	B2
Benzstraße.....	H	5	H2
Bergstraße.....	B	4	B2
Berliner Straße.....	G	1	G2
Besselstraße.....	B	4	B2
Beuthstraße.....	C	1	C2
Biesenburgstraße.....	A	5	A1
Biesenkamp.....	E	3	E2
Biesterstraße.....	G	1	G2
Binnenfeld.....	A	5	A1
Binnen-Voisselt.....	H	3	H2
Birkenstraße.....	G	1	G2
Birkenweg.....	H	5	H2
Bleesweg.....	G	1	G2
Bleichen.....	B	4	B2
Bleichenberg.....	B	4	B2
Blumenstraße.....	D	2	D1
Blumenweg.....	H	2	H1
Böcklerstraße.....	D	2	D1

Bödickerstraße.....	C	1	C2
Böllenstege.....	B	4	B1
Bongert.....	E	3	E2
Borselstege.....	B	4	B1
Boschstraße.....	H	5	H2
Brabanter Straße.....	D	5	D2
Brahmsstraße.....	D	2	D1
Brammenfeld.....	D	2	D2
Brandenburg.....	G	1	G1
Brandströmstraße.....	D	5	D2
Braunstraße.....	F	3	F2
Braustraße.....	H	2	H1
Breiestege.....	B	4	B1
Breite Straße.....	A	5	A2
Breslauer Straße.....	E	3	E2
Bresserbergstraße.....	D	2	D2
Briener Straße.....	F	4	F1
Brodhof.....	A	5	A2
Brücktor.....	B	4	B2
Brüningstraße.....	F	3	F2
Buchacker.....	E	3	E1
Buchholz.....	G	1	G1
Bullmannstraße.....	E	3	E1
Burggarten.....	B	4	B2
Burgstraße.....	H	2	H1
Burgunderstraße.....	D	5	D2
Bussardstraße.....	E	3	E2
Bylandsweg.....	A	5	A1

C

Cellitinnenweg.....	G	1	H1
Clemensstraße.....	C	1	C1
Cranachstraße.....	G	1	G2
Cunostraße.....	F	3	F2

D

Dahlienweg.....	C	4	C1
Daimlerstraße.....	A	5	A2
Dammstraße.....	F	3	F1
Danziger Straße.....	E	3	E2
De-Beyer-Straße.....	C	1	C2
Dehlerstraße.....	C	4	C1
Deichbogen.....	A	5	A1
Delfter Straße.....	C	4	C1
Deriethstraße.....	H	5	H2
De-Witt-Straße.....	E	3	E1
Dieselstraße.....	A	4	A1
Dietrichstraße.....	B	5	B2
Dingdung.....	A	5	A1
Dinnendahlstraße.....	A	5	A2

Dorfanger.....	G	1	G1
Dorfstraße.....	H	2	H1
Dr.-Heinz-Will-Platz.....	B	4	B1
Dresdener Straße.....	G	1	G2
Drieverweg.....	A	5	A1
Drosselstraße.....	E	3	E2
Drususdeich.....	A	5	A2
Drususstraße.....	D	5	D2
Düffelgaustraße.....	A	5	A1
Düffelstraße.....	G	1	G1
Dürerstraße.....	G	1	G2
Duvenpoll.....	F	3	F2
Dyckmansweg.....	B	4	B2

E

Echternacher Straße.....	A	5	A2
Ehlenstraße.....	A	5	A1
Ehlersweg.....	C	4	C1
Eichenallee.....	A	5	A2
Eichenstraße.....	G	1	G2
Eichenwinkel.....	G	1	G1
Eiserner Mann.....	C	1	C2
Eisenpaß.....	E	3	E1
Elsternweg.....	A	5	A2
Emmericher Straße von Hausnr. 1-81.....	F	3	F2
Emmericher Straße von Hausnr. 82-280.....	E	3	E2
Engelsstraße.....	G	1	G1
Erikastraße.....	H	2	H1
Ernst-Goldschmidt-Str.....	B	4	B1
Erzbergerstraße.....	F	3	F2
Esperance.....	D	2	D2
Et Steentje.....	A	5	A2

F

Fährmannsweg.....	A	5	A1
Falkenweg.....	A	5	A2
Fasanenweg.....	H	2	H1
Fasbenderstraße.....	E	3	E1
Fasia-Jansen-Straße.....	A	5	A2
Feldmannstege.....	B	4	B1
Feldstraße.....	E	3	E2
Felix-Roeloffs-Straße.....	C	1	C1
Ferdinandstraße.....	E	3	E1
Fettpott.....	G	1	G1
Fichtenstraße.....	G	1	G2
Finkenweg.....	E	3	E2

Waste disposal regions Kleve 2025

Fischerweg	F	3	F1	
Fitchburger Straße	C	4	C1	
Flandrische Straße	B	5	B2	
Flasbloem	F	4	F1	
Fleischhauerstraße	B	4	B1	
Fliersol	G	1	G1	
Flinckstraße	C	1	C2	
Florastraße	H	2	H1	
Florianweg	D	5	D2	
Flurstraße	C	1	C1	
Flutstraße	A	4	A1	
Forstweg	D	2	D2	
Frankenstraße von Hausnr. 1-17	B	4	B1	
Frankenstr. von Hausnr. 19-43 und 20-50	B	5	B2	
Frankenstr. von Hausnr. 45-67 und 52-68	D	5	D2	
Fredestraße	D	2	D1	
Friedhofsweg	F	3	F1	
Friedrich-Ebert-Ring	F	3	F2	
Fritz-Pannier-Straße	D	2	D1	
Fristerweg	A	5	A1	
Fuchsweg	G	1	G2	
Fujjstraße	H	5	H2	

G

Gabriele-Münter-Straße	C	1	C2	
Galleien	B	4	B2	
Gartenstege	B	4	B1	
Gartenstraße	H	2	H1	
Gärtnergasse	B	4	B1	
Gasthausstraße	B	4	B2	
Geefacker	E	3	E1	
Geeracker	A	5	A1	
Geldenberg	G	1	G1	
Gellsol	G	1	G1	
Gemeindeweg	G	1	G2	
Genneper Straße	C	4	C1	
Georgstraße	C	4	C1	
Georgsweg	H	5	H2	
Germaniastraße	C	4	C1	
Gertrud-Boss-Straße	C	1	C1	
Gerwin	B	4	B1	
Gildeweg	F	3	F2	
Ginsterweg	H	5	H2	
Gnadenthal	H	5	H2	

Goethestraße	A	4	A1	
Goldacker	E	3	E2	
Goldstraße	B	4	B1	
Görresstraße	D	2	D1	
Grabenstraße	B	4	B2	
Graf-Johann-Straße	B	4	B1	
Graf-Otto-Straße	D	2	D1	
Graf-Ranzow-Straße	H	2	H1	
Grenzallee	D	2	D2	
Grenzweg	F	3	F1	
Grindweide	A	5	A1	
Große Straße	B	4	B1	
Großer Heideberg	B	4	B1	
Großer Markt	B	4	B1	
Gruftgasse	B	4	B2	
Gruftstraße	B	4	B2	
Grüner Heideberg	B	4	B1	
Grüner Ring	H	2	H1	
Grüner Weg	F	3	F2	
Grunewaldstraße	G	1	G1	
Gütchen	E	3	E1	
Gutenbergstraße	D	2	D1	
Gymnasiumstege	B	4	B1	

H

Hafenstraße	B	4	B2	
Hagsche Poort	B	4	B1	
Hagsche Straße	B	4	B1	
Hahnenacker	F	3	F2	
Halderweide	A	5	A1	
Hammscher Kerkweg	E	3	E2	
Hammscher Weg von Hausnr. 1 - 22	E	3	E2	
Hammscher Weg von Hausnr 43 - 74	F	4	F1	
Hamstraße	G	1	G2	
Hanns-Lamers-Platz	B	4	B2	
Harvantsweg	A	5	A1	
Hasenberg	B	4	B1	
Hasenweg	G	1	G2	
Hauptstraße	H	5	H2	
Havik	A	5	A2	
Haydnstraße	D	2	D1	
Heerstraße	A	5	A1	
Heidberg	D	2	D2	
Heideberger Mauer	B	4	B1	
Heidestraße	H	5	H2	

Heinestraße	G	1	G2	
Heinrich-Bause-Straße	E	3	E1	
Heinrichsstraße	H	2	H1	
Heldgasse	B	4	B2	
Heldstraße	B	4	B2	
Hellingsbüschchen	D	2	D1	
Henri-Dunant-Straße	C	1	C2	
Herderstraße	A	4	A1	
Heresbachstraße	H	4	H2	
Hermann-Gmeiner-Straße	D	2	D2	
Hermann-Pardun-Straße	F	4	F1	
Hermannstraße	A	5	A2	
Hermesplatz	F	3	F2	
Hertenberg	B	4	B2	
Herzog-Adolfsweg	D	5	D2	
Herzogbrücke	B	4	B2	
Herzogstraße	B	4	B2	
Hirschbruch	G	1	G1	
Hirschpfehl	D	2	D2	
Hirschweg	G	1	G2	
Hofacker	A	5	A1	
Hofberg	G	1	G1	
Hoffmannallee	C	2	C1	
Hohe Straße	A	5	A2	
Höhenweg	H	2	H1	
Hoher Weg	E	3	E2	
Holbeinstraße	C	1	C2	
Hölderlinstraße	G	1	G2	
Holthuisstraße	G	1	G2	
Hölzernes Wams	C	4	C1	
Hooge Hurdt	E	3	E2	
Hooge Wey	F	3	F2	
Hooger Geest	F	4	F1	
Hopfensackstege	B	4	B1	
Hornstege	C	4	C1	
Hövelscher Weg	F	3	F2	
Huf'scher Weg	A	5	A1	
Hüfgen	G	1	G1	
Hügelweg	H	2	H1	
Huisberdener Straße	F	3	F2	
Huiskampstraße	F	3	F2	
Huissener Straße	C	1	C1	
Hunscheidtstraße	D	5	D2	

I

Illtisweg	G	1	G1	
Im Felde	A	5	A2	
Im Hag	C	4	C1	
Im Huck	F	3	F2	
Im Winkel	A	5	A1	

In de Kamp	G	1	G2	
In de Klink	G	1	G1	
In den Galleien	B	4	B2	
In der Aue	B	4	B2	

J

Jägerstraße	C	1	C2	
Jahnstraße	E	3	E1	
Jenaer Straße	G	1	G2	
Johanna-Sebus-Straße	H	3	H2	
Johannesstraße	E	3	E1	
Johann-Manger-Straße	E	3	E2	
Joseph-Beuys-Allee	H	5	H2	
Jülicher Straße	D	2	D1	
Jungferngraben	E	3	E1	
Jungfernstraße	F	3	F2	

K

Kahle Plack	G	1	G1	
Kalkarer Straße	B	4	B2	
Kämpstraße	H	5	H2	
Kanalstraße	A	4	A1	
Kapellenstraße	H	2	H1	
Kapitelstraße	B	4	B1	
Kaplan-Mertens-Straße	G	1	G2	
Kapuzinerstraße	H	4	H2	
Karl-Kisters-Straße	H	5	H2	
Karl-Leisner-Straße	C	1	C1	
Karlstraße	B	4	B2	
Karolingerstraße	D	2	D1	
Karussellplatz	B	4	B1	
Kasinostraße	B	4	B1	
Kastanienweg	D	2	D2	
Katharinenweg	A	5	A1	
Kattenwald	G	1	G1	
Katzenhof	G	1	G2	
Kavarinerstraße	B	4	B1	
Kayserstraße	G	1	G2	
Keekener Straße	A	5	A2	
Kellenshof	E	3	E1	
Kellensward	E	3	E1	
Kellerskathweg	A	5	A2	
Kendelstraße	H	2	H1	
Kerkenkamp	H	3	H2	
Kerkpad	A	5	A2	
Kermisdahlstraße	B	4	B2	
Kermisdahlufer	B	4	B2	
Ketelweg	G	1	G1	
Kiebitzweg	A	5	A2	
Kiefernweg	G	1	G2	

Waste disposal regions Kleve 2025

Römerstraße	B	5	B2		
Ronser Straße	G	1	G2		
Rosa-Luxemburg-Straße	F	3	F2		
Rosenstraße	D	2	D1		
Rosenweg	C	4	C1		
Röstendaalstraße	A	5	A1		
Rostocker Straße	G	1	G2		
Rubensweg	C	1	G2		
Ruppenthaler Weg	H	2	H1		
Rütgerstraße	B	4	B1		

S

Saalhof	G	1	G2
Saalstraße	H	2	H1
Saalweg	H	2	H1
Sackstraße von Hausnr. 1-145	C	1	G2
Sackstraße von Hausnr. 147-196	C	4	C1
Salmorth	F	3	F1
Sandstraße	A	5	A1
Sandweg	H	2	H1
Schaarweg	F	3	F2
Schaepenfeld	D	2	D2
Schauinsland	D	2	D1
Scheidemannstraße	F	3	F2
Schenkenschanz	F	3	F1
Schildacker	F	3	F2
Schillerstraße	A	4	A1
Schlehhecke	G	1	G2
Schloßberg	B	4	B1
Schloßstraße	B	4	B1
Schloßtorstraße	B	4	B1
Schlötel	E	3	E1
Schlucht	H	5	H2
Schlußgasse	B	4	B1
Schmidtstraße	D	2	D1
Schmiedjesweg	F	3	F2
Schollenrondell	B	4	B1
Scholtenstraße	D	2	D1
Schröderstraße	D	2	D1
Schubertstraße	G	1	G2
Schulgasse	B	4	B1
Schulstraße	E	3	E1
Schulweg	A	5	A1
Schürkamp	A	5	A2
Schüttestraße	D	2	D1
Schwänchen	F	3	F2
Schwanenstraße	B	4	B1

Schweinemarkt	B	4	B1		
Schweizer Straße	D	2	D2		
Selkant	E	3	E1		
Serntstraße	A	5	A2		
Severingstraße	F	3	F2		
Siegener Straße	C	1	C2		
Siegertstraße	C	1	C2		
Siegfriedstraße	C	4	C1		
Siemensstraße	H	5	H2		
Soester Straße	C	1	C2		
Sommerdeich	A	4	A1		
Sonnenweg	F	4	F1		
Sperlingsweg	A	5	A2		
Spicker	A	5	A1		
Spielberg	H	5	H2		
Spitzgasse	B	4	B2		
Spoyufer	B	4	B2		
Spykscher Baum	H	3	H2		

Spysckstraße von Hausnr. 1-92	A	4	A1
Spysckstraße von Hausnr. 101-257	A	5	A2
St. Annaberg	H	2	H1
Stadionstraße	D	2	D1
Stadtbadstraße	B	4	B2
Stadtwald	D	2	D2
Stapperstraße	D	2	D1
Starenweg	E	3	E2
Starthof	H	5	H2
Stechbahn	B	4	B1
Steege	F	3	F1
Steenowe	F	3	E2
Steenpad	E	3	E2
Stegstraße	A	5	A1
Steinstraße	F	4	F1
Stelzenweg	E	3	E2
Stephanstraße	B	4	B2
Stettiner Straße	B	4	B2
Stickestraße	B	4	B1
Stieglitzweg	E	3	E2
Stiller Winkel	H	5	H2
Stoppelberg	G	1	G1
Stresemannstraße	F	3	F2
Südstraße	C	1	C2

T

Talstraße	H	2	H1
Tannenweg	D	2	D2
Tavenraatstraße	G	1	G2

Thaerstraße	D	2	D1		
Theodor-Heuss-Straße	C	4	C1		
Theodorstraße	A	5	A2		
Tichelstraße	A	5	A2		
Tichlers Mühle	D	2	D1		
Tiergartenstr. von Hausnr. 1-33 und 2-50	B	4	B2		
Tiergartenstr. von Hausnr. 35-111 und 52-112	H	5	H2		
Tillsiterstraße	G	1	G2		
Tinthofstraße	G	1	G2		
Tochtgraben	F	3	F2		
Treppkesweg	H	2	H1		
Triftstraße von Hausnr. 1-99 und 2-118	C	1	C2		
Triftstraße von Hausnr. 105-159 und 126-180	F	2	F2		
Trübsche Straße	A	5	A1		
Tulpenweg	D	2	D1		
Turmstraße	B	4	B2		
Tweestrom	A	5	A2		

U

Uedemer Straße	C	1	C1
Uhlandstraße	G	1	G2
Ulmenweg	E	3	E1

V

Valentinsweg	B	5	H2
van-Bracht-Stege	B	4	B1
van-Brackel-Straße	C	1	C2
van-de-Locht-Straße	E	3	E1
van-den-Bergh-Straße	E	3	E2
van-Goyen-Straße	G	1	G2
van-Houten-Straße	F	4	F1
van-Kampen-Straße	H	5	H2
Veldeckestraße	B	4	B2
Visdael	F	3	F2
von-Brentano-Straße	C	4	C1
von-Eyll-Straße	H	5	H2
von-Galen-Straße	B	4	B1
von-Ketteler-Straße	F	4	F1
von-Velsen-Straße	D	2	D1
Vossegatt	A	5	A1
Vossenfeld	E	3	E1

W

Waalstraße	H	2	H1
Wagnerstraße	D	2	D1
Waldsaum	H	5	H2
Waldstraße	D	5	D2
Wasserburgallee von Hausnr. 20-52	H	5	H2
Wasserburgallee von Hausnr. 112-120	A	5	A2
Wasserstraße	B	4	B2
Wasserweg	D	2	D2
Webergasse	B	4	B2
Weberstraße	B	4	B2
Wehrpöhl	F	3	F1
Weidenstraße	A	5	A2
Welbershöhe	D	2	D1
Wertstraße	B	4	B2
Weseler Straße	C	1	C2
Weyerstege von Hausnr. 1-29	B	4	B1
Weyerstege von Hausnr. 36-57	C	1	C2
Wiesenstraße	E	4	F1
Wildgehege	G	1	G2
Wilhelm-Fries-Straße	D	2	D2
Wilhelm-Reintjes-Str.	E	3	E2
Wilhelm-Sinstdeden-Str.	F	4	F1
Wilhelmstraße	E	3	E1
Willibrordstraße	E	3	E1
Willy-Brandt-Straße	D	2	D1
Winkelgasse	B	4	B2
Wolfsgraben	G	1	G1
Worcester Straße	C	1	C1

Z

Ziegelstraße	A	5	A2
Zum Breijpott	E	3	E1
Zur alten Kirche	E	3	E1
Zur Alten Mühle	A	5	A2
Zur Buchenhecke	H	5	H2
Zur Schleuse	F	4	F1
Zyfflicher Straße	A	5	A1

USK recycling centre Kleve

USK recycling centre Kleve

Wilhelm-Sinsteden-Straße 1

(at corner Briener Straße)

Opening times

Wed 08am to 12pm and 1pm to 4pm

Thu, Fri 10am to 12pm and 1pm to 6pm

Sat 08am to 12pm

The recycling centre is closed on public holidays and on 04 July 2025.

Opening and running the recycling centre has raised the service level in the field of waste disposal for the citizens of Kleve considerably.

There is the opportunity to deliver various types of household waste at convenient opening times. However, only waste from private households in amounts that correspond to a normal household (up to 2 cubic metres or 200 kilograms) can be accepted. Industrial waste is not accepted!

The following types of waste are accepted free of charge:

- Yellow recyclables bags
- Waste glass from the glass boxes
- Electric and electronic scrap, cable rests, household batteries (Old batteries and accumulators that are not covered by a waste device have to be separated!)
- Waste paper and cardboard
- Bulky waste (at most 4 deliveries per year and no more than 2 cubic metres or 200 kilograms per delivery)
- Bottle corks
- Scrap iron and metal
- Old clothes and shoes

Apart from that, the following types of waste are accepted for a fee and in amounts that correspond to a normal household:

- Household waste
- Organic household waste
- Garden and green waste (no root stocks)
- Construction wood (doors and windows, pallets, floor boards, wood planks, square timbers, chipboards, laminate, rustic fence, garden wood etc.)
- Contaminated wood (sleepers, telegraph poles, impregnated wood etc.)
- Construction waste
- Mixed construction waste (insulation material, onduline sheets, Heraklit boards; roof foil, waste resulting from house and flat renovation and from clearing out activities etc.)
- Flat glass
- Foil

We apply the fees that are valid in accordance with the regulations on the charge of fees for the disposal of waste in the town of Kleve. They are displayed at the recycling centre. The fees are also displayed on the Internet (www.kleve.de) and can be enquired at USK by phone on 89 94 77.

PLEASE NOTE:

The recycling centre is available only to citizens of Kleve. Therefore, you have to present your personal ID when delivering waste. Also, you have to prove on demand to centre staff that delivered waste is from the area of Kleve, it is sufficient to present a written note that says where the waste has accumulated and who owns the waste (name, address, phone number).

Contact details/Opening times

Brabanter Straße 62, 47533 Kleve
Phone 0 28 21 - 89 94 00 (switchboard)
For waste information: 0 28 21 - 89 94 77
usk@kleve.de
www.kleve.de und www.usk-kleve.de



Opening times: Mo to Wed 08am to 16pm
Thu 08am to 17pm
Fr 08am to 13pm

Recycling centre Kleve
Wilhelm-Sinsteden-Straße 1
(at corner Briener Straße)

Opening times: Wed 08am to 12am & 13pm to 16pm
Thu + Fr 10am to 12am & 13pm to 18pm
Sat 08am to 12am

Our current opening times

Waste consultation
Weezer Straße 3, 47589 Uedem
Phone 0 28 25 - 90 34 20
www.kkagmbh.de



Waste disposal centre North, Kreis Kleve
Abfallwirtschaftsgesellschaft Ltd
Alte Bahn 133, 47551 Bedburg-Hau/Moyland
Phone 0 28 24 - 9 26 03

Opening times: Mo to Fr 08am to 4.30pm
Sat 08.30am to 12.30pm

Waste disposal centre South, Kreis Kleve
Abfallwirtschaftsgesellschaft Ltd
Niersbroecker Weg 11, 47608 Geldern-Pont
Phone 0 28 34 - 91 61 10

Opening times: Mo to Fr 08am to 5pm
Sat 08.30am to 12.30pm

If you move house to somewhere outside Kleve or within Kleve, or if the amount of people in your household changes, please contact the local city office or with the department of finances and properties:

Department of Central Administration,
public service/local city office
Minoritenplatz 1, 47533 Kleve
Phone 0 28 21 - 84 600

Opening times: Mo + Wed 07.30am to 5pm
Tue + Fr 07.30am to 12.30pm
Thu 07.30am to 4pm
Sat 10am to 1pm

Department of finances and properties
Department of taxes and levies
Minoritenplatz 1, 47533 Kleve
Phone 0 28 21 - 84 252 or 0 28 21 - 84 230

Opening times: Mo to Fr 8.30am to 12.30pm
Mo + Wed 2pm to 5pm
Thu 2pm to 4pm



Kleve waste disposal calendar 2025

Month	1	2	3	4	5	6	7	8	9	10	11	12	13	14	15	16	17	18	19	20	21	22	23	24	25	26	27	28	29	30	31
January	New Year's Day	2 3 3	3 4 4 5	4 SA	5 SU	6 1 5 E1	7 2 A E2	8 3 B F1	9 4 C F2	10 5 D E/F	11 SA	12 SU	13 1 1	14 2 2	15 3 3	16 4 4	17 5 5	18 SA	19 SU	20 1 E G1	21 2 F G2	22 3 G H1	23 4 H H2 X	24 5 G H	25 SA	26 SU	27 1 1	28 2 2	29 3 3	30 4 4	31 5 5
February	1 SA	2 SU	3 1 A A1	4 2 B A2	5 3 C B1	6 4 D B2	7 5 A B	8 SA	9 SU	10 1 1	11 2 2	12 3 3	13 4 4	14 5 5	15 SA	16 SU	17 1 E C1	18 2 F C2	19 3 G D1	20 4 H D2 X	21 5 C D	22 SA	23 SU	24 1 1	25 2 2 3	26 3 4 5	27 4 4	28 5 5			
March	1 SA	2 SU	3 no Garbage Collection	4 1 A E1	5 2 B E2	6 3 C F1	7 4 D F2	8 SA	9 SU	10 1 1	11 2 2	12 3 3	13 4 4	14 5 5	15 SA	16 SU	17 1 E G1	18 2 F G2	19 3 G H1	20 4 H H2 X	21 5 G H	22 SA	23 SU	24 1 1	25 2 2	26 3 3	27 4 4	28 5 5	29 SA	30 SU	31 A A1
April	1 2 B A2	2 3 C B1	3 4 D B2	4 5 A B	5 SA	6 SU	7 1 1	8 2 2	9 3 3	10 4 4	11 5 5	12 SA	13 SU	14 1 E C1	15 2 F C2	16 3 G D1	17 4 H D2	18 Good Friday	19 SA	20 SU	21 Easter Monday	22 1 1	23 2 2	24 3 3 4 X	25 4 5 5	26 SA	27 SU	28 1 A E1	29 2 B E2	30 3 C F1	
May	1 Labour Day	2 4 D F2	3 SA	4 SU	5 1 1	6 2 2	7 3 3	8 4 4	9 5 5	10 SA	11 SU	12 1 E G1	13 2 F G2	14 3 G H1	15 4 H H2	16 5 G H	17 SA	18 SU	19 1 1	20 2 2	21 3 3	22 4 4	23 5 5	24 SA	25 SU	26 1 A A1	27 2 B A2	28 3 C B1	29 Ascension Day	30 4 D B2	31 SA
June	1 SU	2 1 1	3 2 2	4 3 3	5 4 4	6 5 5	7 SA	8 SU	9 Pentecost	10 1 E C1	11 2 F C2	12 3 G D1	13 4 H D2	14 SA	15 SU	16 1 1	17 2 2	18 3 3 4	19 Corpus Christi	20 4 5 5	21 SA	22 SU	23 1 A E1	24 2 B E2	25 3 C F1	26 4 D F2 X	27 5 E F	28 SA	29 SU	30 1 1	
July	1 2 2	2 3 3 4	3 4 5 5	4 no Garbage Collection	5 SA	6 SU	7 1 E G1	8 2 F G2	9 3 G H1	10 4 H H2	11 5 G H	12 SA	13 SU	14 1 1	15 2 2	16 3 3	17 4 4	18 5 5	19 SA	20 SU	21 1 A A1	22 2 B A2	23 3 C B1	24 4 D B2 X	25 5 A B	26 SA	27 SU	28 1 1	29 2 2	30 3 3	31 4 4
August	1 5 5	2 SA	3 SU	4 1 E C1	5 2 F C2	6 3 G D1	7 4 H D2	8 5 C D	9 SA	10 SU	11 1 1	12 2 2	13 3 3	14 4 4	15 5 5	16 SA	17 SU	18 1 A E1	19 2 B E2	20 3 C F1	21 4 D F2 X	22 5 E F	23 SA	24 SU	25 1 1	26 2 2	27 3 3	28 4 4	29 5 5	30 SA	31 SU
September	1 1 E G1	2 2 F G2	3 3 G H1	4 4 H H2	5 5 G H	6 SA	7 SU	8 1 1	9 2 2	10 3 3	11 4 4	12 5 5	13 SA	14 SU	15 1 A A1	16 2 B A2	17 3 C B1	18 4 D B2	19 5 A B	20 SA	21 SU	22 1 1	23 2 2	24 3 3	25 4 4	26 5 5	27 SA	28 SU	29 1 E C1	30 2 F C2	
October	1 3 G D1	2 4 H D2	3 Day of German Unity	4 SA	5 SU	6 1 1	7 2 2	8 3 3	9 4 4	10 5 5	11 SA	12 SU	13 1 A E1	14 2 B E2	15 3 C F1	16 4 D F2	17 5 E F	18 SA	19 SU	20 1 1	21 2 2	22 3 3	23 4 4 X	24 5 5	25 SA	26 SU	27 1 E G1	28 2 F G2	29 3 G H1	30 4 H H2	31 5 G H
November	1 All Saints Day	2 SU	3 1 1	4 2 2	5 3 3	6 4 4	7 5 5	8 SA	9 SU	10 1 A A1	11 2 B A2	12 3 C B1	13 4 D B2	14 5 A B	15 SA	16 SU	17 1 1	18 2 2	19 3 3	20 4 4 X	21 5 5	22 SA	23 SU	24 1 E C1	25 2 F C2	26 3 G D1	27 4 H D2	28 5 C D	29 SA	30 SU	
December	1 1 1	2 2 2	3 3 3	4 4 4	5 5 5	6 SA	7 SU	8 1 A E1	9 2 B E2	10 3 C F1	11 4 D F2	12 5 E F	13 SA	14 SU	15 1 1	16 2 2	17 3 3	18 4 4	19 5 5	20 SA	21 SU	22 E F H1	23 G H H2	24 Christmas Eve	25 Christmas Day	26 Christmas Day	27 SA	28 SU	29 1 1	30 2 3 3	31 New Year's Eve

Grey bin
Non-recyclable waste

Green bin
Paper, cardboard

Brown bin
Garden waste

Glass boxes
Hollow glass

Yellow bin
Plastics/metals

Resources
Old clothes/sneakers, mixed metals, small electric devices

waste vehicle
Special waste

My districts